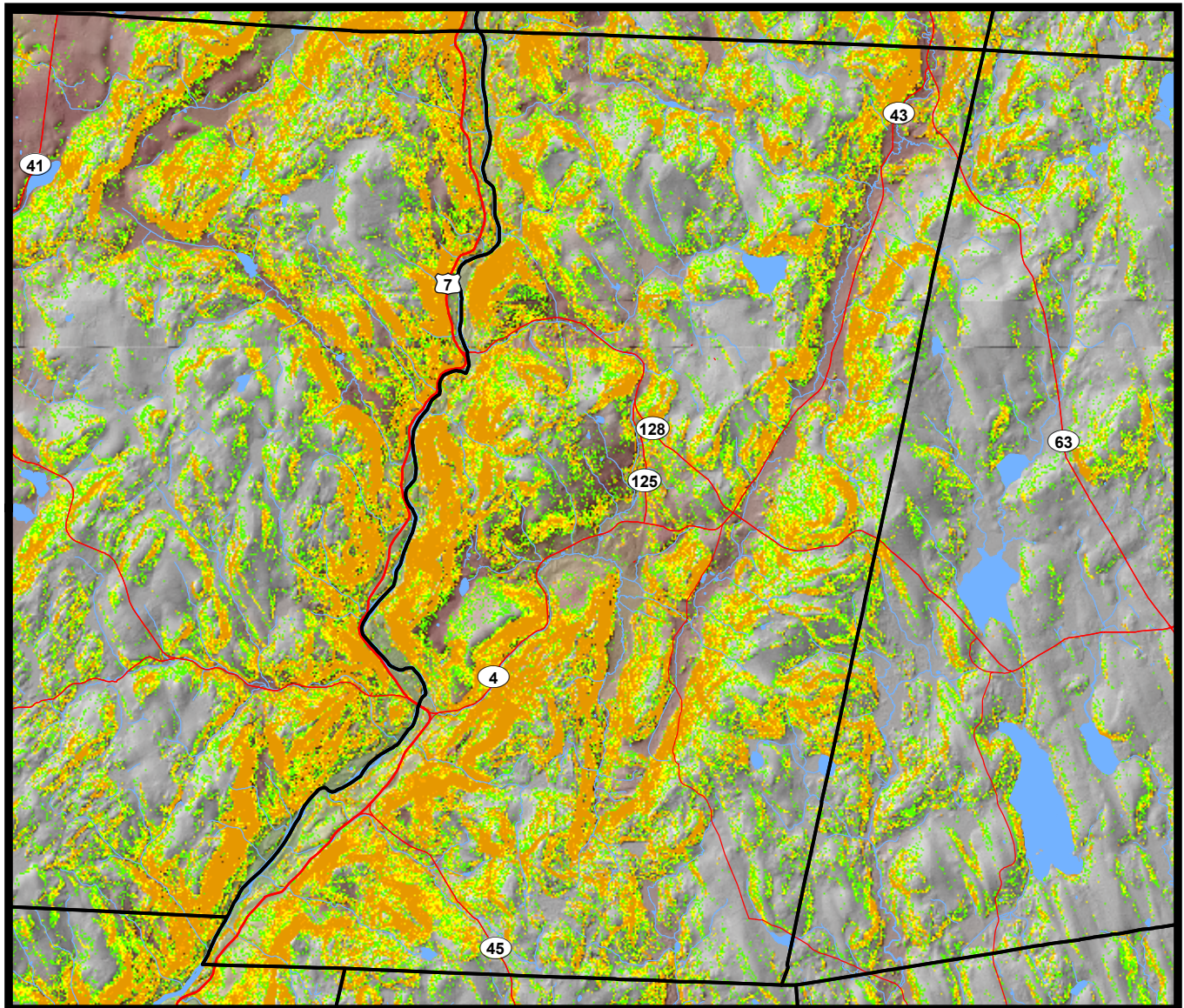


Community Resource Inventory Map Series



Legend

- Towns
- Major Highway
- Primary Route
- Secondary Route
- Ramp
- Water

Slope

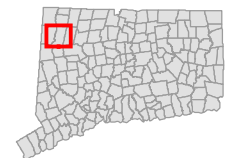
- 15-20%
- 20-25%
- 25-30%
- 30+ %

Hillshade

- High : 254
- Low : 0



0 0.45 0.9 1.8 2.7 Miles



More Information: Visit <http://clear.uconn.edu/projects/cri>

Data source: Spatial interpolation of airborne LiDAR data collected in 2000. These elevation data are intended for research, education and demonstration purposes only. They have a horizontal resolution of 10 feet and a vertical resolution of 1 foot. The LiDAR data from which the elevation surface and slope were interpolated had a horizontal spacing of generally 20 feet.

This project was funded in part by the CT DEP through an EPA Clean Water Act Section 319 Nonpoint Source Grant. NEMO is an educational program of the Center for Land use Education and Research (CLEAR) at the University of Connecticut.

These maps are intended for general information and planning purposes only. They contain no authoritative positional information.

