

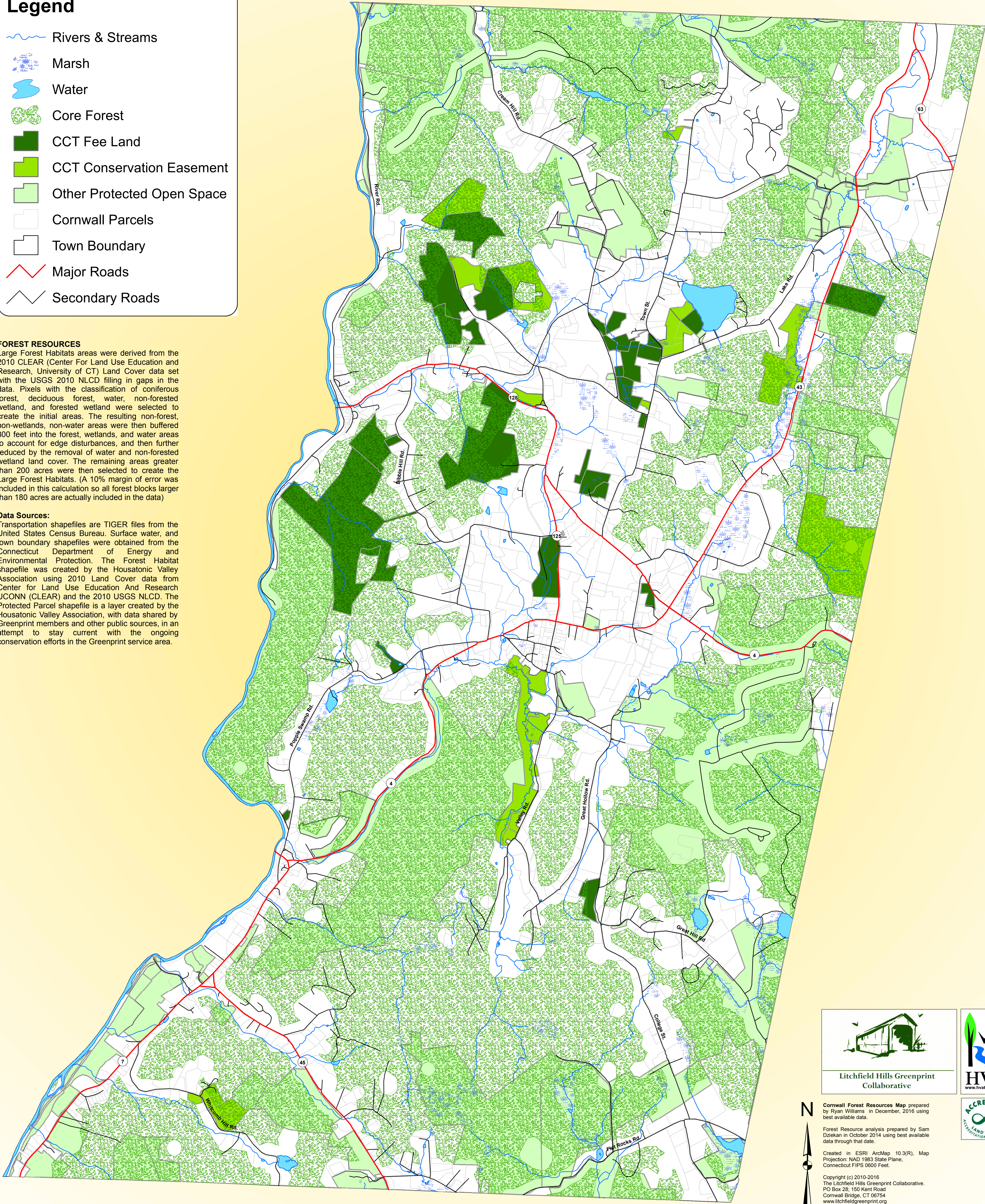
CORNWALL FOREST RESOURCES

Legend

- Rivers & Streams
- Marsh
- Water
- Core Forest
- CCT Fee Land
- CCT Conservation Easement
- Other Protected Open Space
- Cornwall Parcels
- Town Boundary
- Major Roads
- Secondary Roads

FOREST RESOURCES
Large Forest Habitats areas were derived from the 2010 CLEAR (Center For Land Use Education and Research, University of CT) Land Cover data set with the USGS 2010 NLCD filling in gaps in the data. Pixels with the classification of coniferous forest, deciduous forest, water, non-forested wetland, and forested wetland were selected to create the initial areas. The resulting non-forest, non-wetlands, non-water areas were then buffered 300 feet into the forest, wetlands, and water areas to account for edge disturbances, and then further reduced by the removal of water and non-forested wetland land cover. The remaining areas greater than 200 acres were then selected to create the Large Forest Habitats. (A 10% margin of error was included in this calculation so all forest blocks larger than 180 acres are actually included in the data)

Data Sources:
Transportation shapefiles are TIGER files from the United States Census Bureau. Surface water, and town boundary shapefiles were obtained from the Connecticut Department of Energy and Environmental Protection. The Forest Habitat shapefile was created by the Housatonic Valley Association using 2010 Land Cover data from Center for Land Use Education And Research UCONN (CLEAR) and the 2010 USGS NLCD. The Protected Parcel shapefile is a layer created by the Housatonic Valley Association, with data shared by Greenprint members and other public sources, in an attempt to stay current with the ongoing conservation efforts in the Greenprint service area.



0 0.5 1 2 3 4 Miles

Information on this map is provided for purposes of discussion only, not to be considered an accurate survey.



Cornwall Forest Resources Map prepared by Ryan Williams in December, 2016 using best available data.
Forest Resource analysis prepared by Sam Dziekan in October 2014 using best available data through that date.
Created in ESRI ArcMap 10.3(R), Map Projection: NAD 1983 State Plane, Connecticut FIPS 0600 Feet.
Copyright (c) 2010-2016
The Litchfield Hills Greenprint Collaborative.
PO Box 28, 150 Kent Road
Cornwall Bridge, CT 06754
www.litchfieldgreenprint.org
Phone: 860-672-6678
Email: maps@hvatoday.org