

Introduction

The Cornwall Planning and Zoning Commission have requested assistance from the King's Mark Environmental Review Team (ERT) in conducting a natural resource inventory and review of the town to be used in the preparation of an update to the town plan of conservation and development. The Planning and Zoning Commission recently prepared six natural resource maps with GIS technology to facilitate improved understanding of the resources in the community. (See following - Base Map, Development Constraints, Water Resources, Agricultural Resources, Open Space Recreation, Historical Sites and added later Protected Parcels.)

Objectives

The ERT is needed to further commission member understanding of the information presented on the maps through written descriptions of the community's natural resource base with an emphasis on identifying key resources that should be considered for conservation or protection. This information is critical to environmentally sound decision making in the town planning process. The ERT was asked to provide a report which identifies the natural resource base and highlights opportunities and limitations for future land use. It is anticipated that the ERT will provide a foundation for a more detailed inventory and evaluation work by the P&Z Commission. The general scope of the work requested includes: geology, soils, hydrology, agriculture, vegetation, wildlife, aquatics, recreation, land use and archaeological and historical significance.

The ERT Process

Through the efforts of the Cornwall Planning and Zoning Commission, this environmental review and report was prepared for the Town of Cornwall.

This report provides a broad array of natural resource and planning information, recommendations and guidelines which cover the topics requested by the Cornwall Planning and Zoning Commission. Team members were able to review maps, plans and supporting documentation provided by the town.

The review process consisted of four phases:

1. Inventory of the site's natural resources;
2. Assessment of these resources;
3. Identification of resource areas and review of plans; and
4. Presentation of education, management and land use guidelines.

The data collection phase involved both literature and field research. The field review was conducted on Tuesday, April 24, 2007. The field review consisted of a driving tour of the town with stops made at significant points as determined by the Planning and Zoning Commission. The emphasis of the field review was on the exchange of ideas, concerns and

recommendations. Some Team members made separate and/or additional site visits, and other Team members conducted only map reviews. The field review allowed Team members to verify information and to identify other resources.

Once Team members had assimilated an adequate data base, they were able to analyze and interpret their findings. Individual Team members then prepared and submitted their reports to the ERT coordinator for compilation into this final ERT report.

TOWN OF CORNWALL Base Map

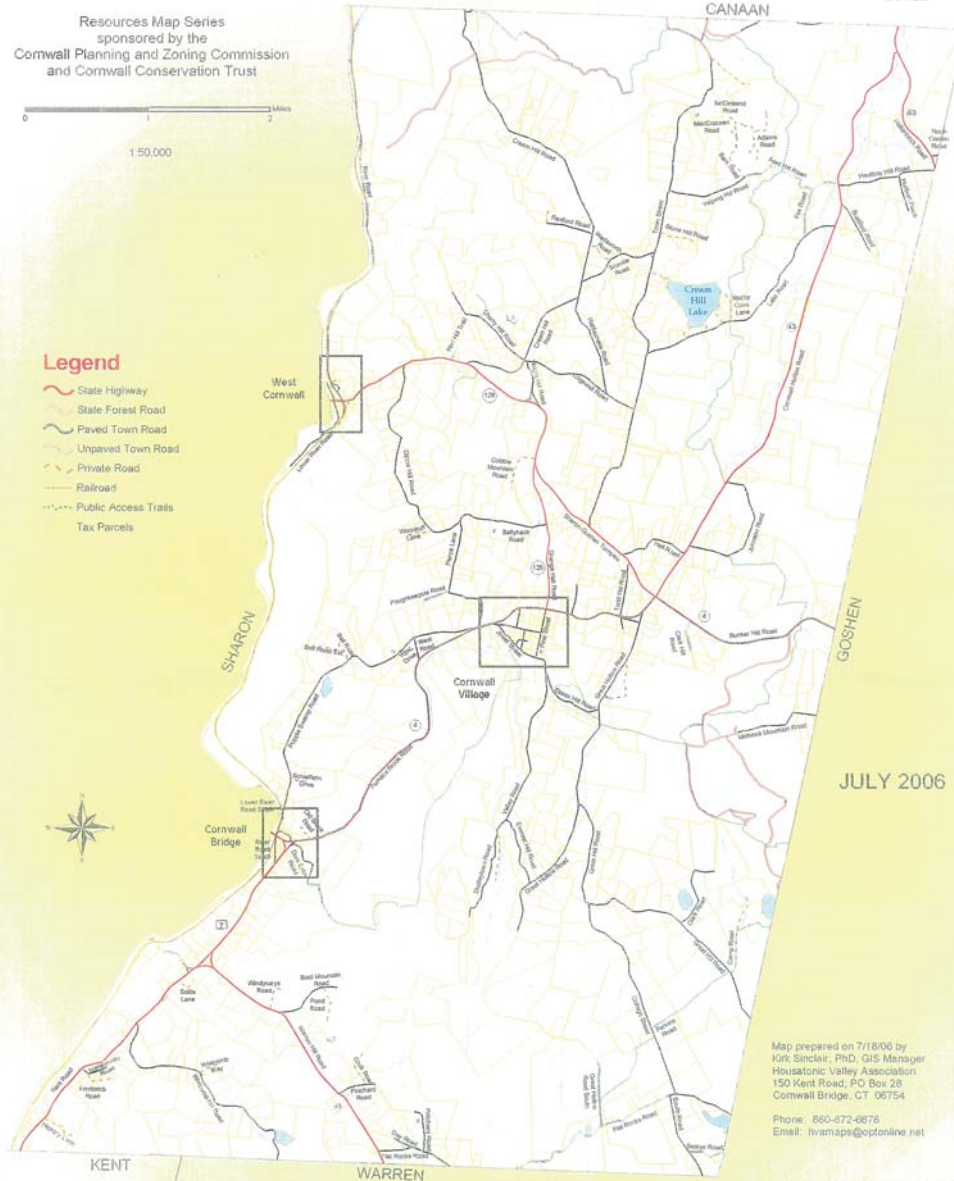


Resources Map Series
sponsored by the
Cornwall Planning and Zoning Commission
and Cornwall Conservation Trust



Legend

- State Highway
- State Forest Road
- Paved Town Road
- Unpaved Town Road
- Private Road
- Railroad
- Public Access Trails
- Tax Parcels



JULY 2006

Map prepared on 7/15/06 by
Kirk Sinclair, PhD, GIS Manager
Housatonic Valley Association
150 Kent Road, PO Box 28
Cornwall Bridge, CT 06754

Phone: 860-672-6876
Email: hvamaps@optonline.net

Cornwall Village 1:16,000



Cornwall Bridge 1:16,000



West Cornwall 1:16,000



Data Sources
Transportation and hydrography is based on the USGS
transportation data obtained from the Environmental GIS
Data distributed by Connecticut's DEP, and enhanced
through the use of town review and digital orthophotos.
Parcels were digitized from the Cornwall tax assessor maps.
Public Access Trails were field checked by Dave Colbert
in September 2005.

A large scale map of this information is available for review
at the Cornwall Planning and Zoning Commission office.

TOWN OF CORNWALL Development Constraints

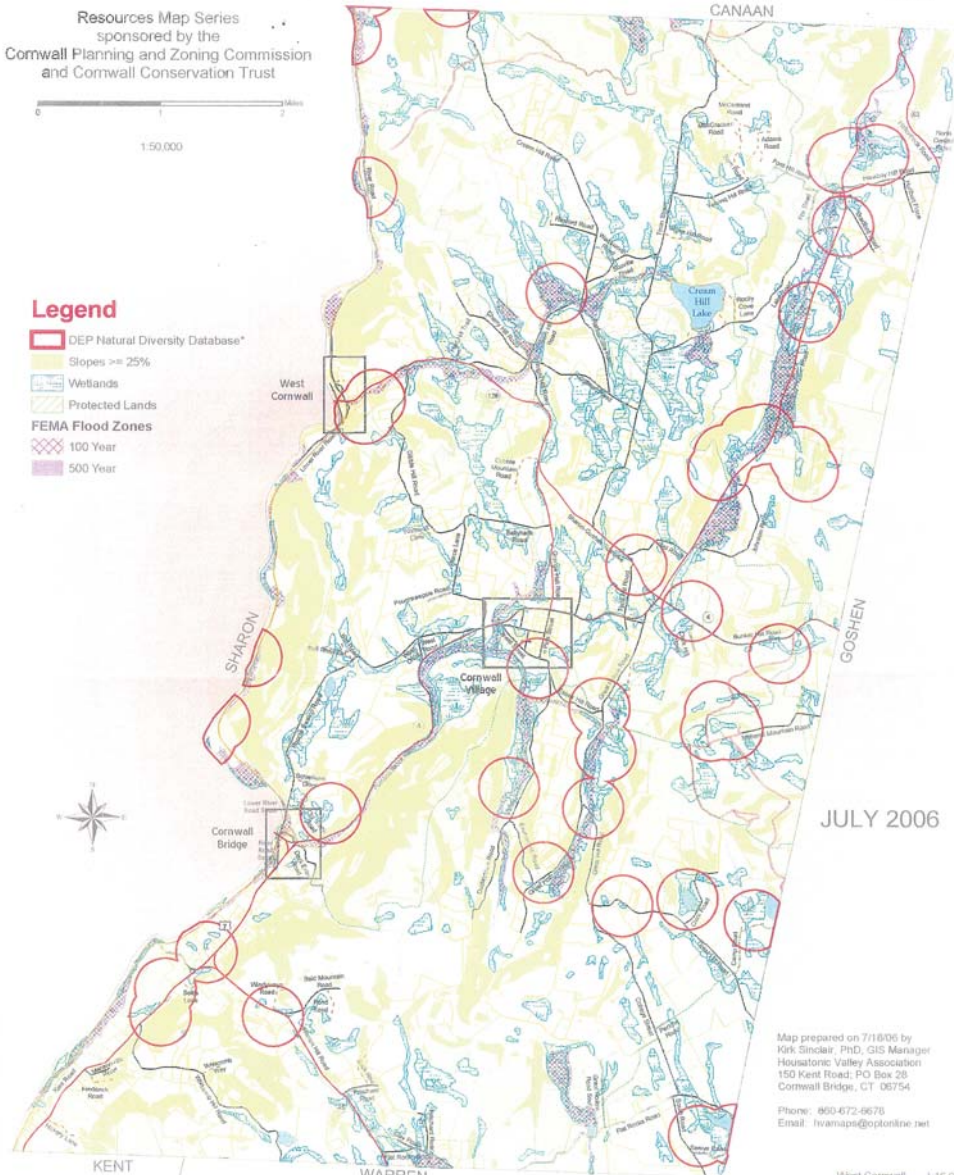


Resources Map Series
sponsored by the
Cornwall Planning and Zoning Commission
and Cornwall Conservation Trust



Legend

- DEP Natural Diversity Database*
- Slopes $\geq 25\%$
- Wetlands
- Protected Lands
- FEMA Flood Zones**
- 100 Year
- 500 Year



JULY 2006

Map prepared on 7/18/06 by
Kirk Sinclair, PhD, GIS Manager
Housatonic Valley Association
150 Kent Road, PO Box 28
Cornwall Bridge, CT 06754

Phone: 860-672-6678
Email: hvamaps@optonline.net

Data Sources
Transportation and hydrography is based on the USGS transportation data obtained from the Environmental GIS Data distributed by Connecticut's DEP, and enhanced through the use of town review and digital orthophotos. Parcels were digitized from the Cornwall tax assessor maps. Wetlands are based on wetland soils from the USDA digital soil survey distributed by DEP. Slopes $\geq 25\%$ were derived from digital elevation models obtained from the National Elevation Dataset. Other environmental data are from the Environmental GIS Data CD distributed by DEP.

A larger scale map of this information is available for review at the Cornwall Planning and Zoning Commission office.

Cornwall Village 1:16,000



Cornwall Bridge 1:16,000



West Cornwall 1:16,000



TOWN OF CORNWALL Water Resources



Resources Map Series
Sponsored by the
Cornwall Planning and Zoning Commission
and Cornwall Conservation Trust



Legend

- Wetlands
- Public Water Supply Watershed
- Wetland Protection Area*
- Potentially Productive Aquifers**
- Fine meltwater deposits
- Coarse meltwater deposits
- Alluvium overlying fine deposits
- Alluvium overlying coarse deposits
- FEMA Flood Zones**
- 100 Year
- 500 Year
- Surface Water Quality Classification**
- AA Highest Quality
- A
- B,C,D to A
- C,D to B Lowest Quality

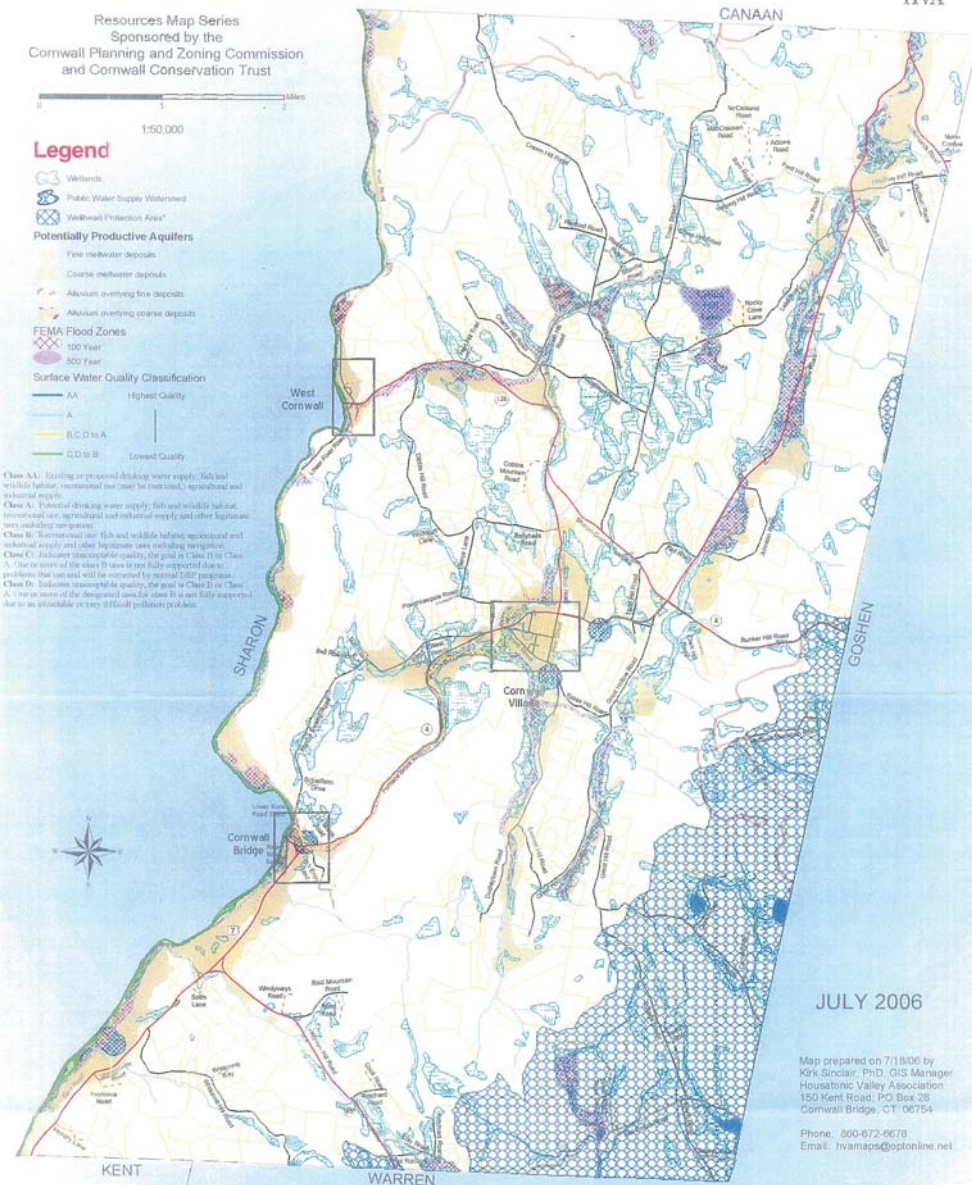
Class AA: Existing or proposed drinking water supply, fish and wildlife habitat, recreational use (not be treated), agricultural and industrial supply.

Class A: Potential drinking water supply, fish and wildlife habitat, recreational use, agricultural and industrial supply and other legitimate uses including navigation.

Class B: Recreational use, fish and wildlife habitat, agricultural and industrial supply and other legitimate uses including navigation.

Class C: Indicates unacceptable quality, the goal is Class B or Class A, but for some of the class B uses is not fully supported due to problems that need to be corrected by normal DDT practices.

Class D: Indicates unacceptable quality, the goal is Class B or Class A, but for some of the designated uses for class B is not fully supported due to an identifiable or very difficult pollution problem.



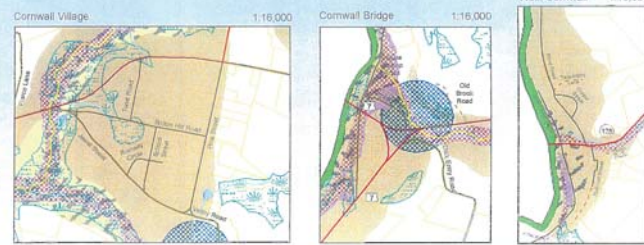
JULY 2006

Map prepared on 7/18/06 by
Kirk Sinclair, PhD, GIS Manager
Housatonic Valley Association
150 Kent Road, PO Box 25
Cornwall Bridge, CT 06754

Phone: 860-672-9678
Email: hvamaps@optonline.net

Data Sources
Transportation and hydrography are based on the USGS transportation data obtained from the Environmental GIS Data distributed by Connecticut's DEP, and enhanced through the use of town review and digital orthophotos. Parcels were digitized from the Cornwall tax assessor maps. Wetlands are based on the USDA digital soil survey distributed by DEP. Other environmental data was obtained from the Environmental GIS dataset on CDs, distributed by the DEP. Potentially Productive Aquifers were selected from Surficial Materials queried best for holding water. Refer to the DEP site, www.dep.state.ct.us/gis/data/guides/dep/ayers/wspclass.htm, for further explanation of each water quality class.

A larger scale map of this information is available for review at the Cornwall Planning and Zoning Commission office.



TOWN OF CORNWALL Agricultural Resources

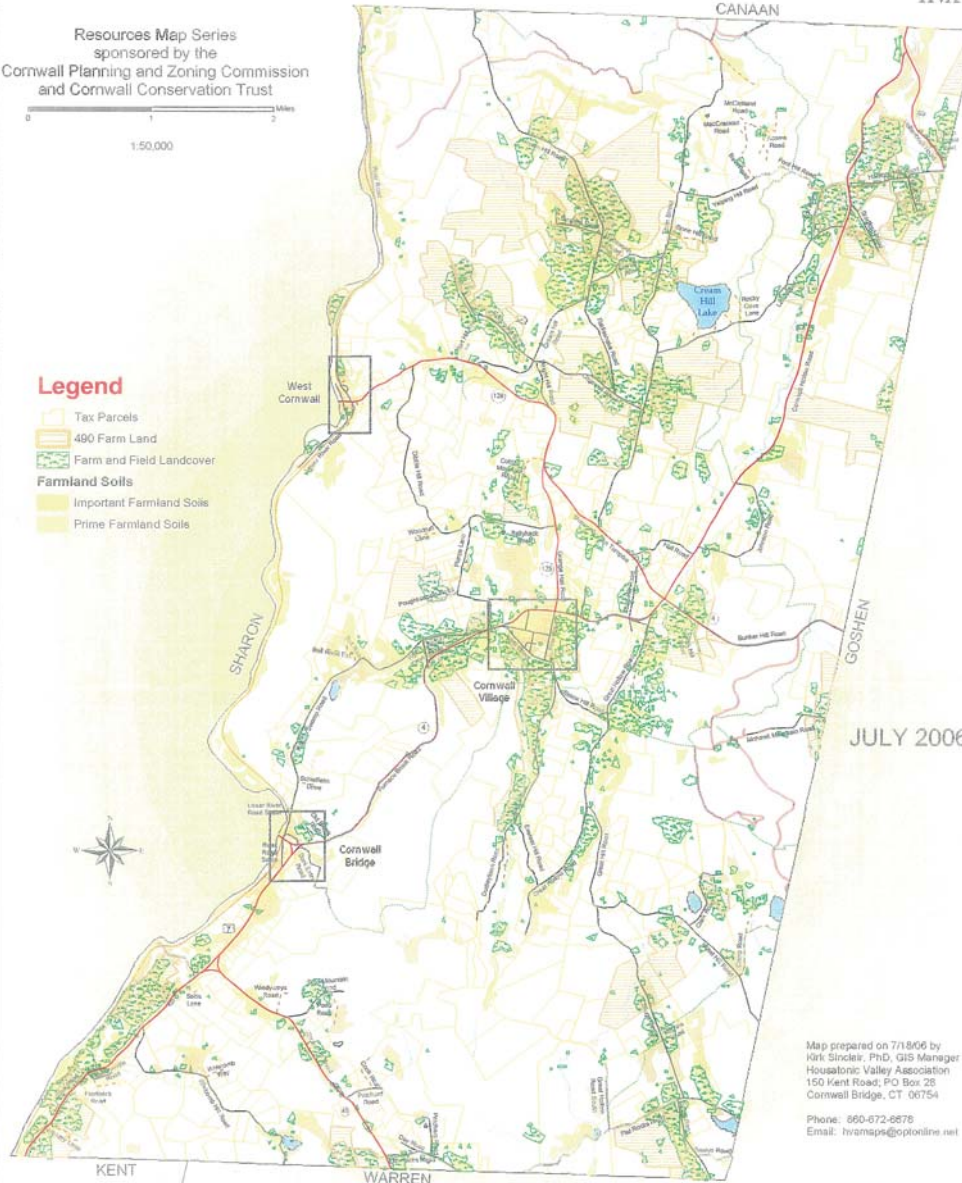


Resources Map Series
sponsored by the
Cornwall Planning and Zoning Commission
and Cornwall Conservation Trust



Legend

- Tax Parcels
- 480 Farm Land
- Farm and Field Landcover
- Farmland Soils**
 - Important Farmland Soils
 - Prime Farmland Soils



JULY 2006

Map prepared on 7/18/06 by
Kirk Siroclet, PhD, GIS Manager
Housatonic Valley Association
150 Kent Road, PO Box 28
Cornwall Bridge, CT 06754

Phone: 860-672-6878
Email: hvamaps@optonline.net

Data Sources
Transportation and hydrography is based on the USGS transportation data obtained from the Environmental GIS Data distributed by Connecticut's DEP, and enhanced through the use of town review and digital orthophotos. Parcels were digitized from the Cornwall tax assessor maps. Farmland soils were derived from the USDA digital soil survey. Farm and field landcover was derived from the 2002 CLEARs Landcover Dataset.

A larger scale map of this information is available for review at Cornwall Planning and Zoning Commission office.

Cornwall Village 1:16,000



Cornwall Bridge 1:16,000



West Cornwall 1:15,000



TOWN OF CORNWALL

Open Space and Recreation Resources



Resources Map Series
 sponsored by the
 Cornwall Planning and Zoning Commission
 and Cornwall Conservation Trust



1:50,000

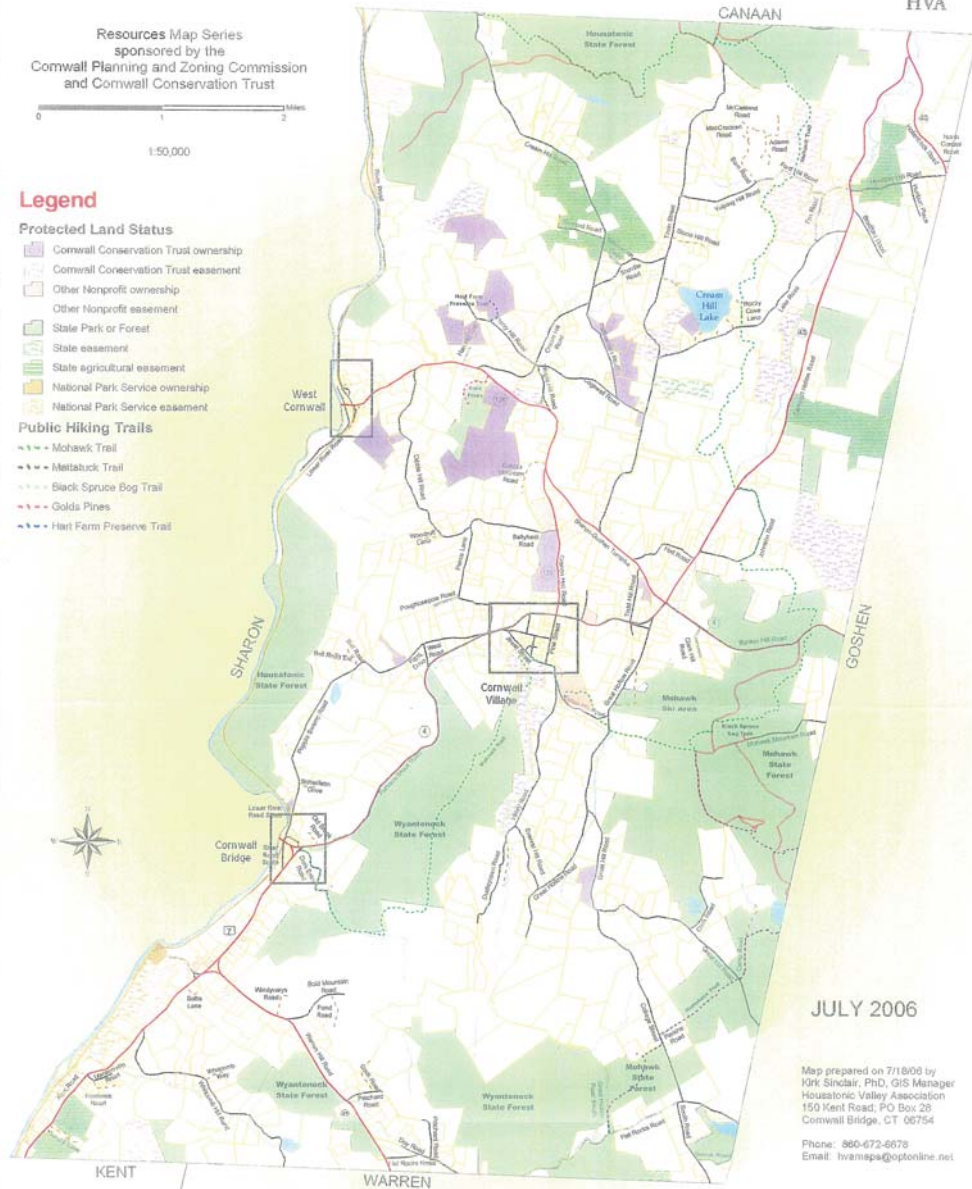
Legend

Protected Land Status

- Cornwall Conservation Trust ownership
- Cornwall Conservation Trust easement
- Other Nonprofit ownership
- Other Nonprofit easement
- State Park or Forest
- State easement
- State agricultural easement
- National Park Service ownership
- National Park Service easement

Public Hiking Trails

- Mohawk Trail
- Mettuck Trail
- Black Spruce Bog Trail
- Golda Pines
- Hart Farm Preserve Trail



JULY 2006

Map prepared on 7/18/06 by
 Kirk Sinclair, PhD, GIS Manager
 Housatonic Valley Association
 150 Kent Road, PO Box 29
 Cornwall Bridge, CT 06754

Phone: 860-672-6678
 Email: hvamaps@optonline.net

Cornwall Village 1:16,000



Cornwall Bridge 1:16,000



West Cornwall 1:16,000



Data Sources:
 Transportation and hydrography is based on the USGS
 transportation data obtained from the Environmental GIS
 Data distributed by Connecticut's DEP, and enhanced
 through the use of town review and digital orthophotos.
 Parcels were digitized from the Cornwall tax assessor maps.
 Protected lands in Cornwall were originally compiled in 1997
 by HVA, and last updated in 2004 with assistance from the
 Cornwall Conservation Trust. Trails were field checked by
 Dave Colbart in September 2006.

A larger scale map of this information is available for review at
 the Cornwall Planning and Zoning Commission.

TOWN OF CORNWALL Historical Sites



Resources Map Series
sponsored by the
Cornwall Planning and Zoning Commission
and Cornwall Conservation Trust

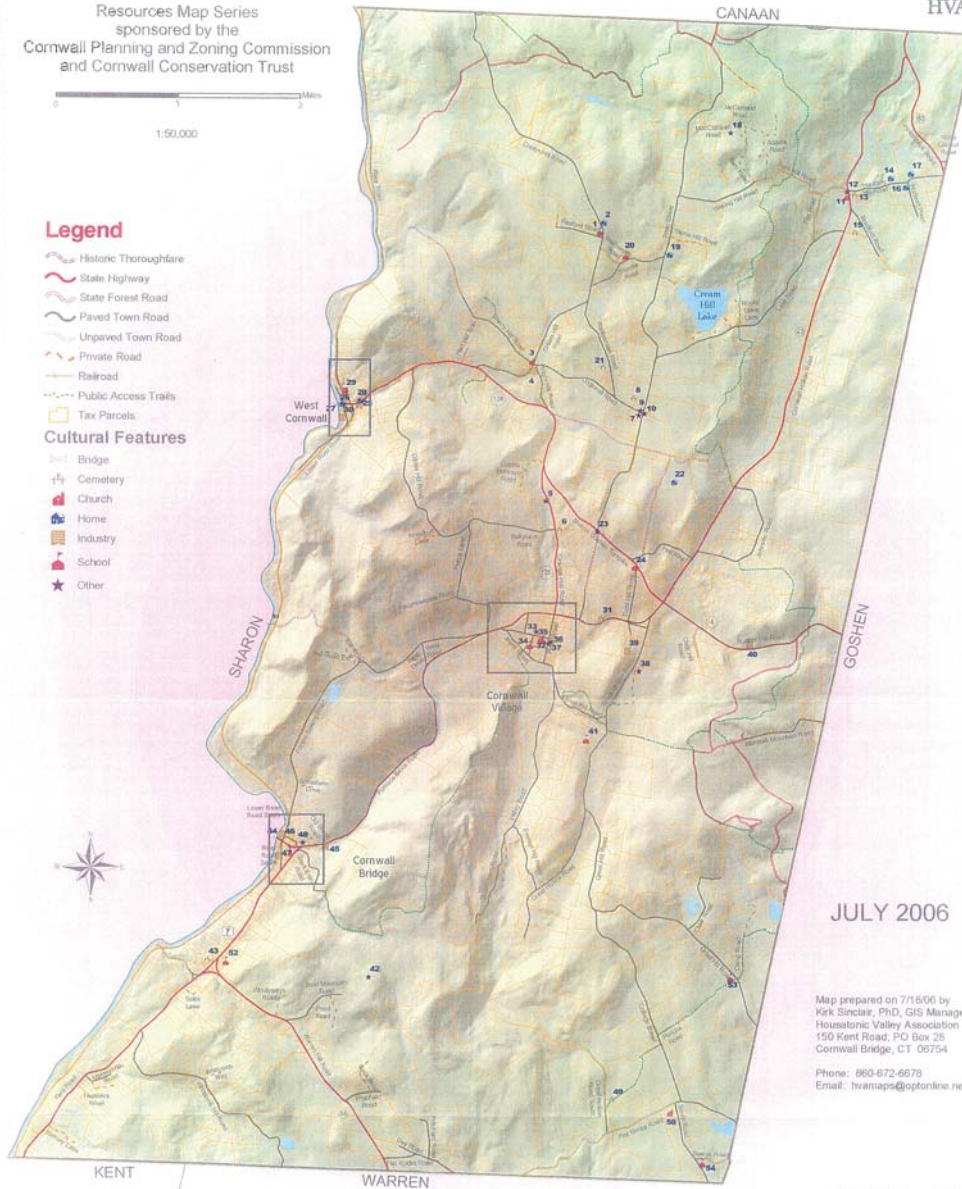


Legend

- Historic Thoroughfare
- State Highway
- State Forest Road
- Paved Town Road
- Unpaved Town Road
- Private Road
- Railroad
- Public Access Trails
- Tax Parcels

Cultural Features

- Bridge
- Cemetery
- Church
- Home
- Industry
- School
- Other



JULY 2006

Map prepared on 7/16/06 by
Kirk Sinclair, PhD, GIS Manager
Housatonic Valley Association
150 Kent Road, P.O. Box 25
Cornwall Bridge, CT 06754
Phone: 860-672-6678
Email: hvamaps@optonline.net

Data Sources:
Topography and hydrography is based on the USGS
topographic data obtained from the Environmental GIS
Data distributed by Connecticut's DEP, and enhanced
through the use of town review and digital orthophotos.
Parcels were digitized from the Cornwall tax assessor maps.
Public Access Trails were field checked by Dave Colbert
in September 2005. Historic Sites and Historic Thoroughfares
were compiled and field checked by Emilee Pryor.

A larger scale map of this information is available for review
at the Cornwall Planning and Zoning Commission office.
Historical site information available on separate spreadsheet.

Cornwall Village 1:16,000



Cornwall Bridge 1:16,000



West Cornwall 1:16,000



Protected Parcels Cornwall, CT



Legend

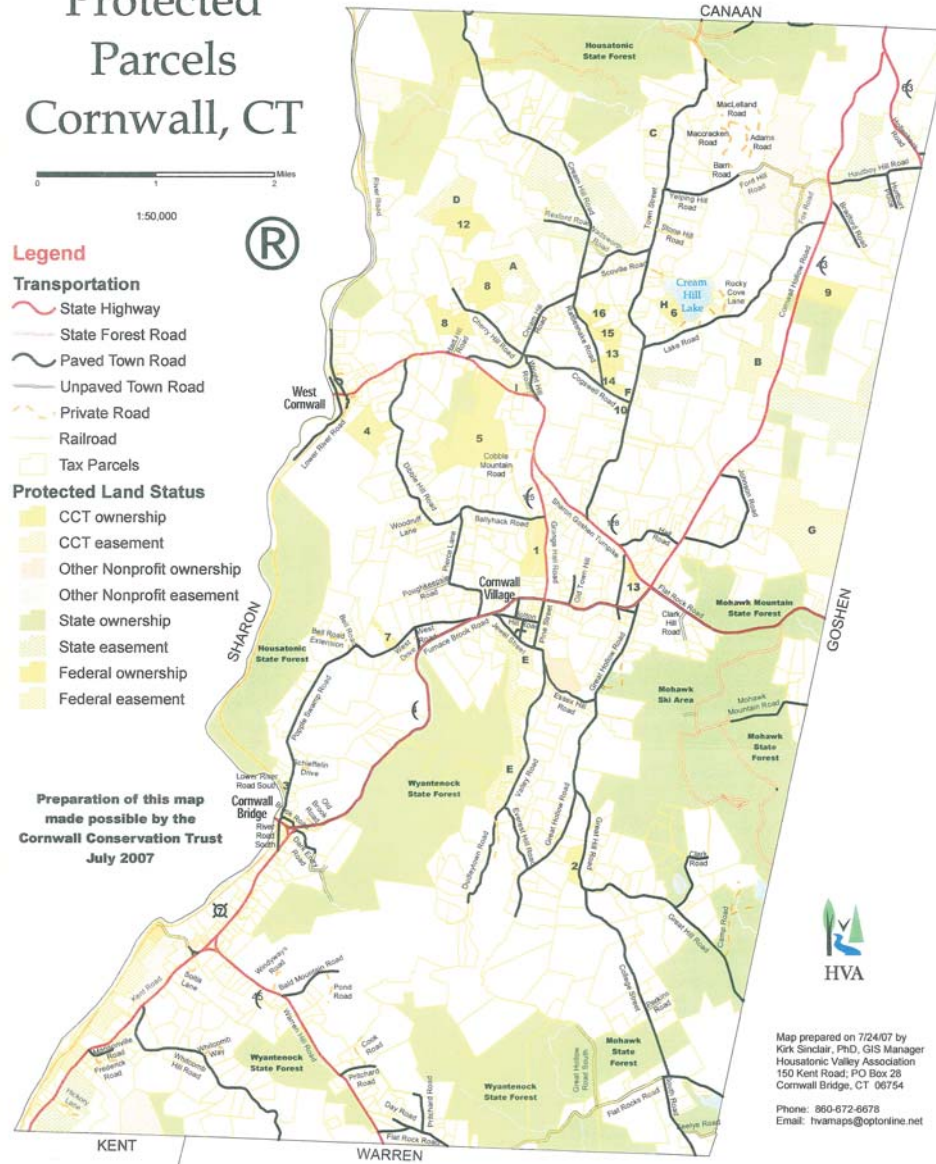
Transportation

- State Highway
- State Forest Road
- Paved Town Road
- Unpaved Town Road
- Private Road
- Railroad
- Tax Parcels

Protected Land Status

- CCT ownership
- CCT easement
- Other Nonprofit ownership
- Other Nonprofit easement
- State ownership
- State easement
- Federal ownership
- Federal easement

Preparation of this map
made possible by the
Cornwall Conservation Trust
July 2007



Map prepared on 7/24/07 by
Kirk Sinclair, PhD, GIS Manager
Housatonic Valley Association
150 Kent Road, PO Box 28
Cornwall Bridge, CT 06754

Phone: 860-672-6678
Email: hvamaps@optonline.net

Cornwall Conservation Trust Ownership Lands

Label	Name	Address	Acres
1	Ballyhack Preserve	Route 125	55
2	Blake Preserve	Great Hill Road	25
3	Bradley Preserve	Purple Swamp Road	3
4	Brokaw Preserve	Dibble Hill Road	53
5	Day Preserve	Route 125	181
6	Dodd Preserve	Lake Road	13
7	Haire Preserve	Purple Swamp Road	10
8	Hart-Cherry Hill Farm	Cherry Hill Road	96
9	Haler Preserve	Route 43	49
10	Ives Preserve	Town Street	4
11	Walker Preserve	Todd Hill Road	8
12	Vogel Preserve	Waller Hill	77
13	Glockner Preserve	Rattlesnake Road	35
14	Rogers Preserve	Rattlesnake Road	17
15	Paul Preserve	Rattlesnake Road	10
16	Van Valkenburgh Preserve	Rattlesnake Road	9

Cornwall Conservation Trust Easement Lands

Label	Name	Address	Acres
A	Bennett Easement	Cream Hill Road	51
B	Chubb Easement	Cornwall Hollow Road	101
C	Clark Easement	Town Street	8
D	Cohen-Congress Easement	Waller Hill	57
E	Coltsfoot Valley Easement	Valley Road	96
F	Fox/Lane Easement	Town Street	4
G	Nuise Easement	Johnson Road	200
H	Prud'homme Easement	Town Street	10
I	Scott Easement	Route 128	13

This map is not to be used
as an accurate survey and
is subject to change.