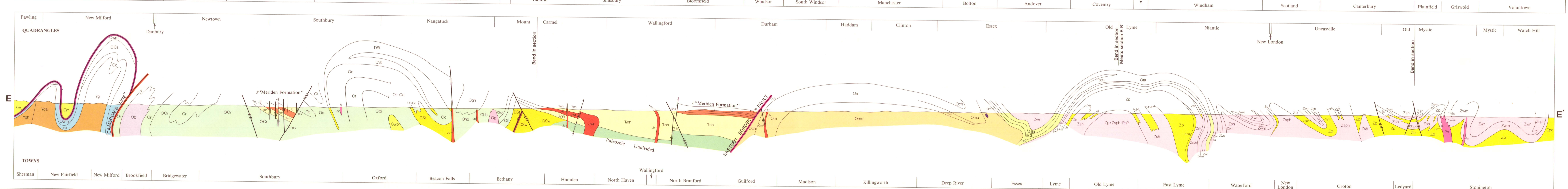
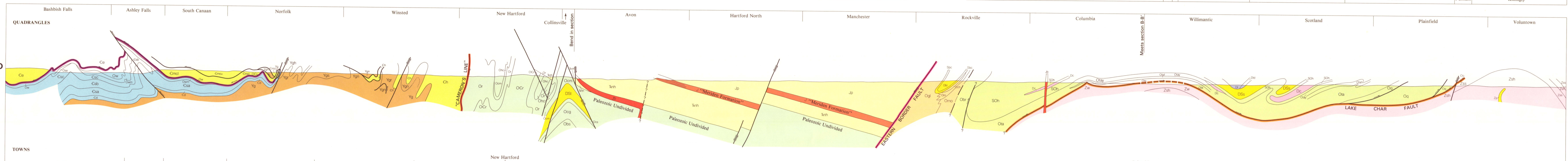
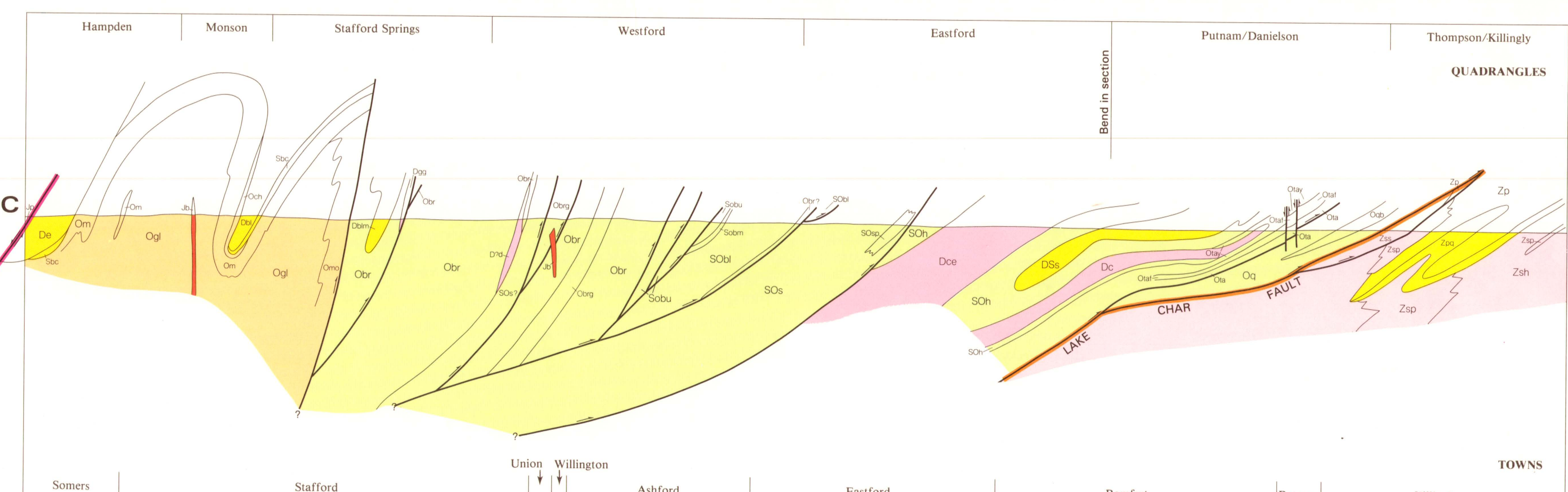
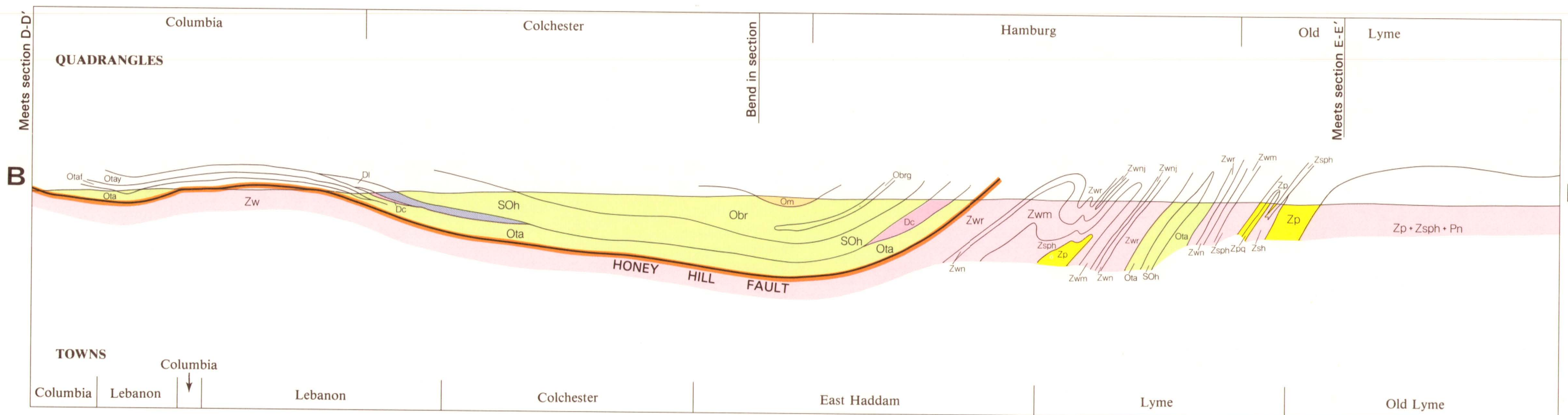




BEDROCK GEOLOGICAL MAP OF CONNECTICUT

Compiled by John Rodgers, Yale University 1985 Connecticut Geological and Natural History Survey

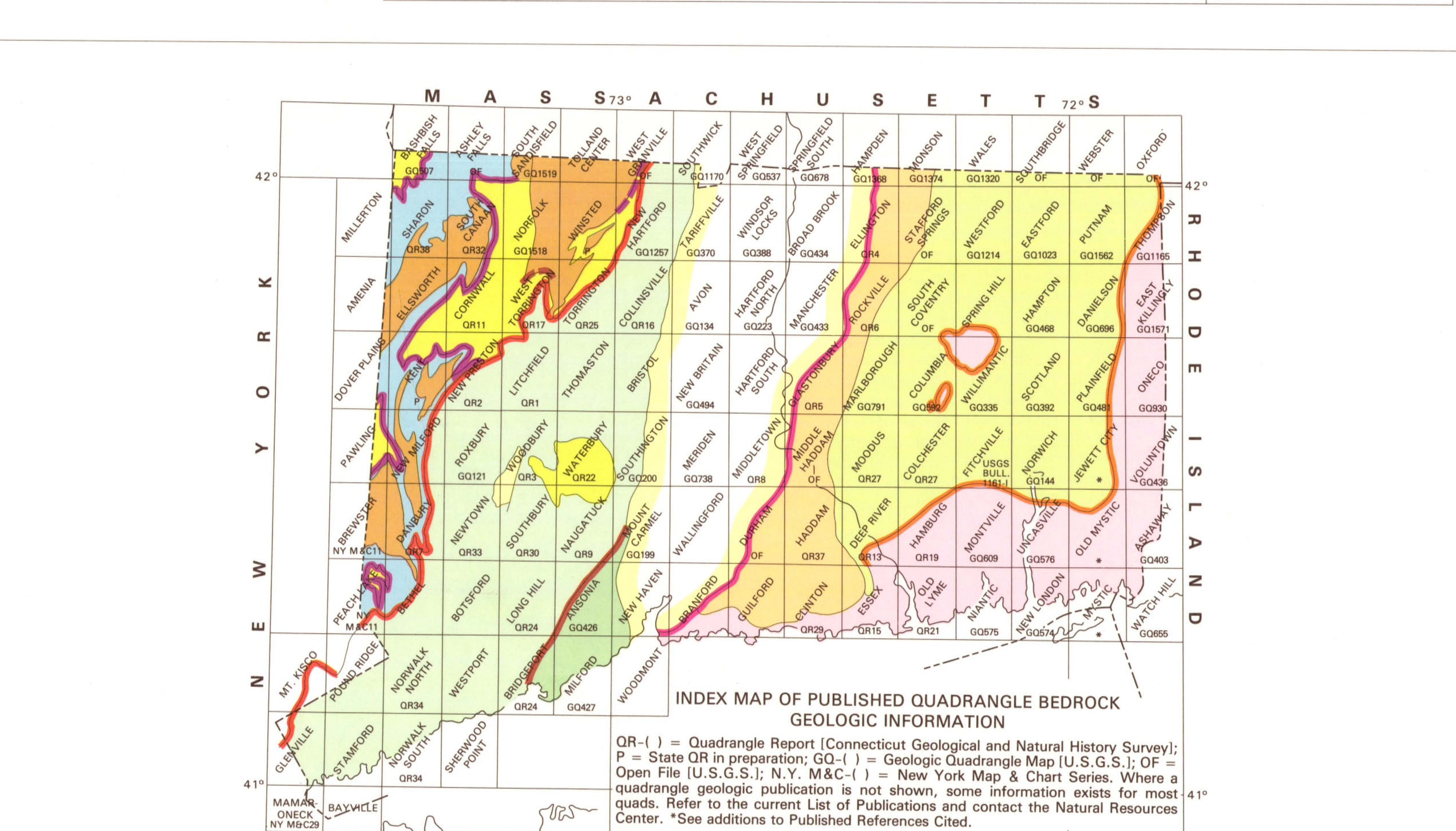
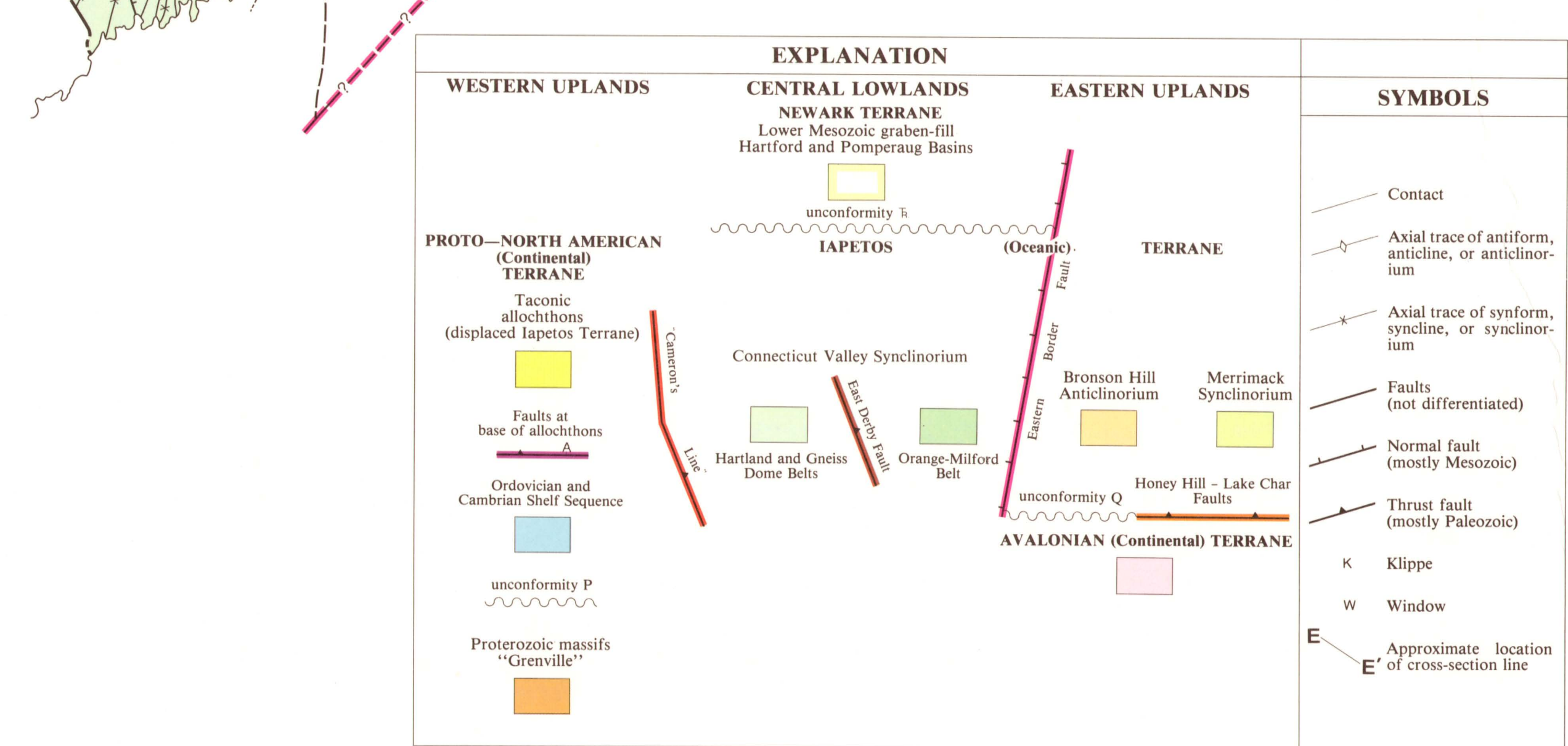
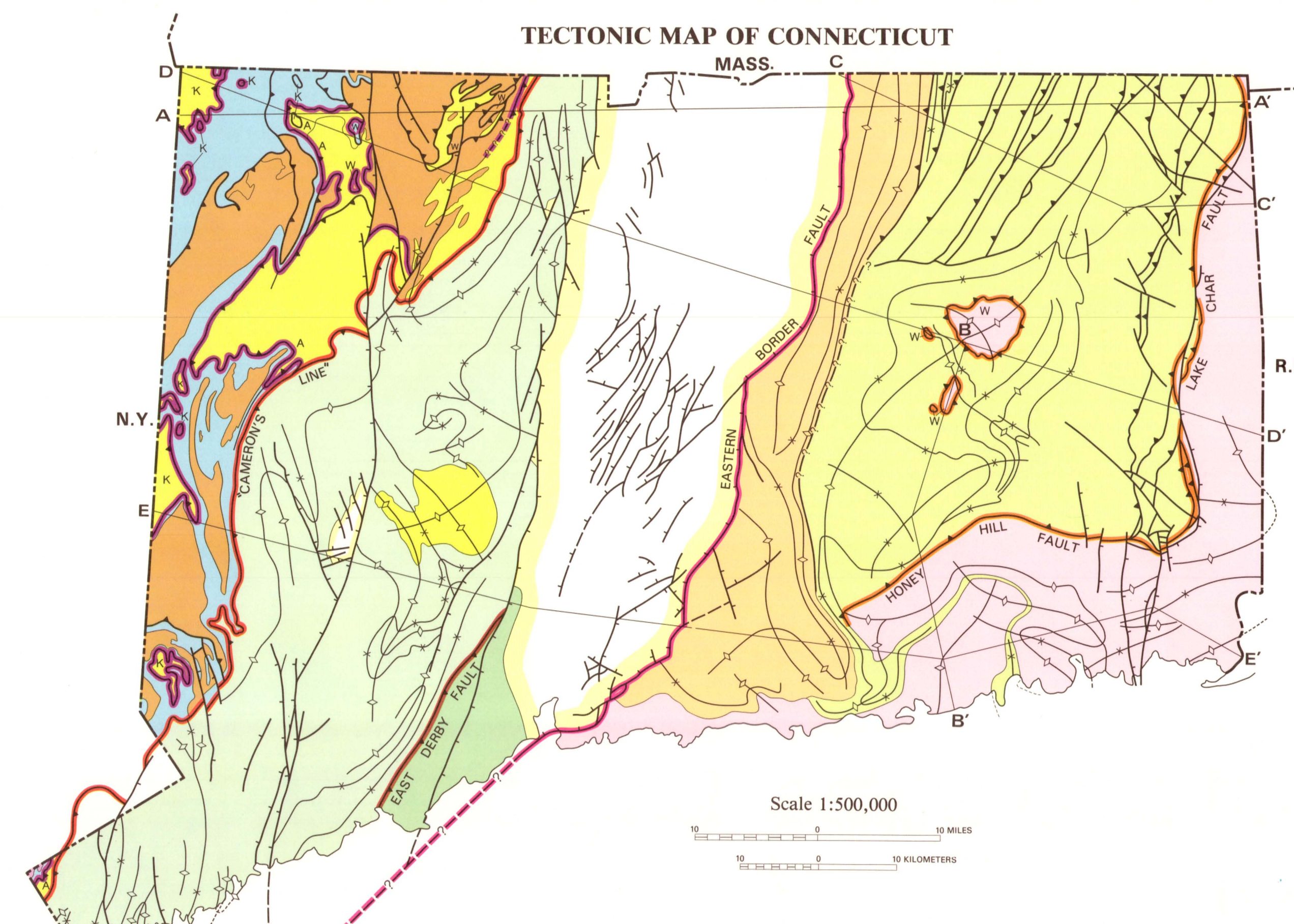
CROSS-SECTIONS For Sheet 1 Scale 1:125,000



DETAILED DESCRIPTION OF MAP UNITS

WESTERN UPLANDS, CENTRAL LOWLANDS, EASTERN UPLANDS

Table with columns for geological units: TACONIC ALGONQUINS DISPLACED IAPETOS TERRANE, CONECTICUT VALLEY SYNCLINORIUM, BRONSON HILL ANTECLINORIUM, MERIMACK SYNCLINORIUM, AVANLONIAN ANTECLINORIUM, and PROTEROZOIC MASSIFS - 'GREENVILLE'.



PUBLISHED REFERENCES CITED: List of geological publications and reports used in the map's compilation.

COLORS FOR SHEET 2: Colors for geological units and symbols for faults and features.